

DAYTONA

HIGH PERFORMANCE PARTS AND ACCESSORIES
FOR ALL THE MOTORCYCLE LOVERS

2019-2020

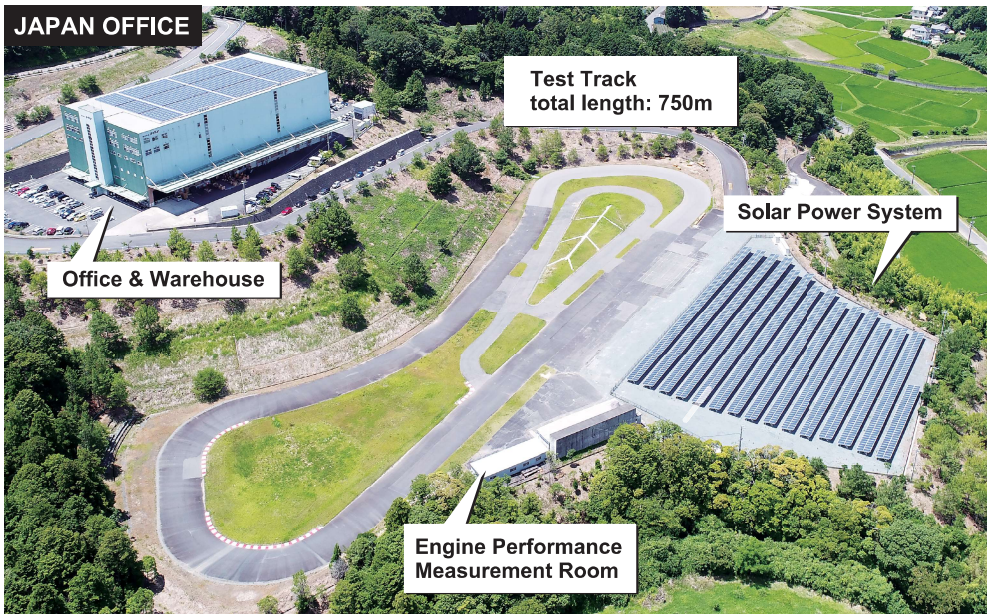


JAPAN

website



DAYTONA



DAYTONA CORPORATION

4805 Ichimiya, Mori-machi,
Shuchi-gun, Shizuoka, 437-0226, Japan
<https://daytona-europe.com>

Message from the president

DAYTONA was established in 1972 and ever since then, we have been trying to create rider-friendly products by pursuing the needs of riders and understanding how to provide them with enjoyable riding conditions.

The R&D team is made up of motorcycle enthusiasts who are always aiming at developing needed products to support riders.

DAYTONA is a top brand name in Japan, assisted by many customers and suppliers.

We hope that all motorcycle lovers around the world would have a chance to use our products and experience what we are able to create.

Truly yours,



Tetsu, Tetsuji Oda



photos by

PHOTO
STUDIO 



Two Needles (SPEED & RPM)



km/h & MPH selectable



0-9,000rpm



0-99,999.9km (mile)



1 & 2, 0-99,999.9km (mile)



0-18.0V



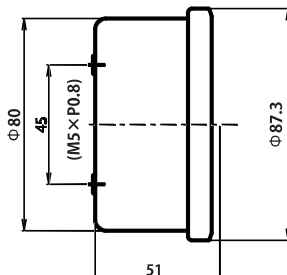
Memory & Recall



Indicators

DIMENSIONS

[mm]



- Stainless-steel housing
- Incl. V-shaped bracket

VELONA80

Electrical Speed & Tachometer Ø80

**VELONA80 shows SPEED & RPM
and has indicators
in one gauge.**



SPEED (needle) & RPM (digital)



- km/h & MPH selectable
- 0-20,000rpm
- 0-99,999.9km (mile)
- 1 & 2, 0-99,999.9km (mile)
- 0-18.0V
- Memory & Recall
- with Red LED lamp
- Indicators

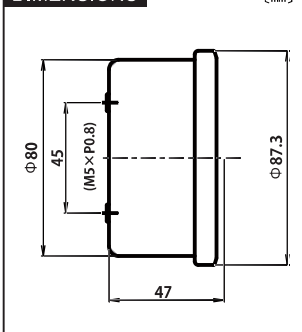
RPM (needle) & SPEED (digital)



- 0-399km/h or 0-260MPH selectable
- 0-99,999km/h(mile)
- 1 & 2, 0-99,999.9km (mile)
- 0-18.0V
- Memory & Recall
- with Red LED lamp
- Indicators

DIMENSIONS

[mm]



- Stainless-steel housing
- Incl. V-shaped bracket

VELONA60

Electrical Speed & Tachometer Ø60



SPEED



88641 [140]



88642 [200]



88643 [260]



km/h & MPH selectable



0-99,999.9km (mile)



1 & 2, 0-99,999.9km (mile)



0-18.0V



Memory & Recall



Indicators

RPM



88644 [9000]



88645 [15000]



88677 [15000]



unit 1000rpm



0-18.0V



Memory & Recall



with Red LED lamp

SPEED



86863 [200]



85833 [200]



86267 [260]



86861 [260]



km/h & MPH selectable



0-99,999.9km (mile)



1 & 2, 0-99,999.9km (mile)



0-18.0V



12h

RPM



86864 [8000rpm]



85835 [8000rpm]



85834 [18000rpm]



86862 [18000rpm] 87527 [15000rpm]



unit 1000rpm



0-9,999hours 59minutes



-20°C ~ +180°C
(+4 °F ~ +356 °F)



12h



Memory & Recall



Memory & Recall

Digital VELONA SPEED & RPM

Electrical Speed & Tachometer



85836



0-399km/h or 0-250MPH



0-20,000rpm



0-99,999km(mile)



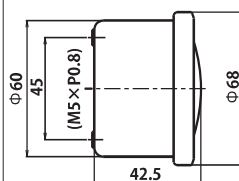
1 & 2, 0-9,999.9km(mile)



RPM bar-scale programmable

DIMENSIONS

[mm]



- Stainless-steel housing
- Incl. V-shaped bracket

VELONA48

Electrical Speed & Tachometer Φ48

VELONA48 is minimal one of VELONA series.
3-colors changeable backlit it is for fun!



SPEED



87383
[140]



87386
[200]



87389
[260]



km/h & MPH selectable



0-99,999.9km (mile)



1 & 2, 0-99,999.9km (mile)



0-18.0V



Memory & Recall



White / Blue / Orange
selectable

RPM



87392
[9000rpm]



87395
[15000rpm]



unit 1000rpm



0-18.0V



Memory & Recall



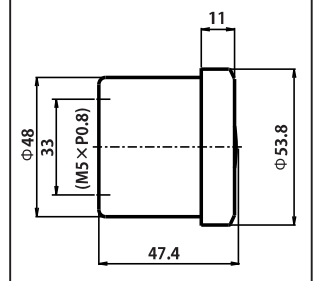
with Red LED lamp



White / Blue / Orange
selectable

DIMENSIONS

[mm]



- Stainless-steel housing
- Incl. V-shaped bracket

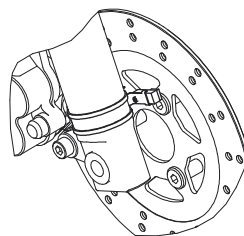
Optional Speed Sensors & Accessories

Proximity Speed Sensor



"Non-contact" type speed sensor, can generate electrical pulse signal from most vehicles.

Wire length : 2000mm



87038

Speed Pulse Converters Turns mechanical movement into electrical pulse signal



Dia10 insert

TRIUMPH, HONDA, BMW etc.

Wire length : 1280mm

87755



Dia18 plug connection

YAMAHA SR400/500 etc.

Wire length : 1280mm

87041



Dia15 insert

HONDA, SUZUKI etc.

Wire length : 1800mm

87143



M12 thread female

YAMAHA, SUZUKI, DUCATI, MOTO GUZZI etc.

Wire length : 1200mm

87429



For BMW

BMW boxer models
Wire length : 700mm

R65, R80, R100, R100GS

88457



Universal

Wire length : 650mm

OEM SPEEDOMETER CABLE

87430

RPM Induction Wire Set



For easy detection of RPM pulse connecting to spark plug wire or to ignition coil

87170

RPM Pulse Rectifier



For cases that RPM pulse cannot be detected well or RPM signal is unstable

92333

VELONA Options

Remote Switch



87047 BLACK



87082 CHROME

Operates VELONA gauges remotely instead of pressing bottom buttons.

- For $\Phi 22.2/25.4$ mm handlebars
- Wiring outside or inside handlebar possible
- Max. current capacity 50mA
- Width 12mm

CNC Bezel Kit for VELONA60



85819 SILVER

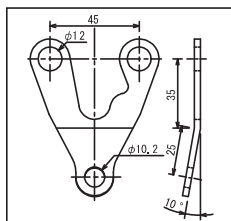


Changes the face of VELONA60!

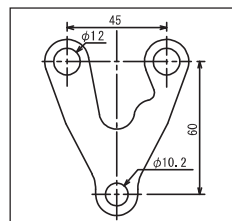
Anti-vibration Brackets for VELONA60



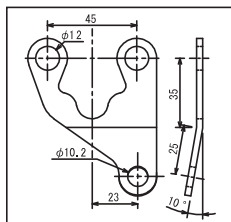
61197



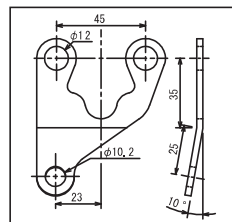
63526



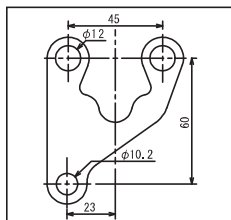
63527



63528



63529



for VELONA60



87404 BLACK



87403 POLISH



for VELONA48



87768 BLACK



87785 BLACK





89363



0-399km/h or 0-250MPH



0-99,999.9km (mile)



1&2, 0-9999.9km (mile)



0-99,999.9km (mile)
Set start from any value



Memory & Recall



N, 1, 2, 3, 4, 5, 6
Top 4/5/6 selectable



12h or 24h



Low Battery Warning



8.0-18.0V



Indicators



0-10,000 or 20,000rpm



Bar-graph blinking



Memory & Recall



Fuel Gauge
(100Ω, 250Ω, 510Ω)



0°C ~ +150°C
(+32°F ~ +356°F)

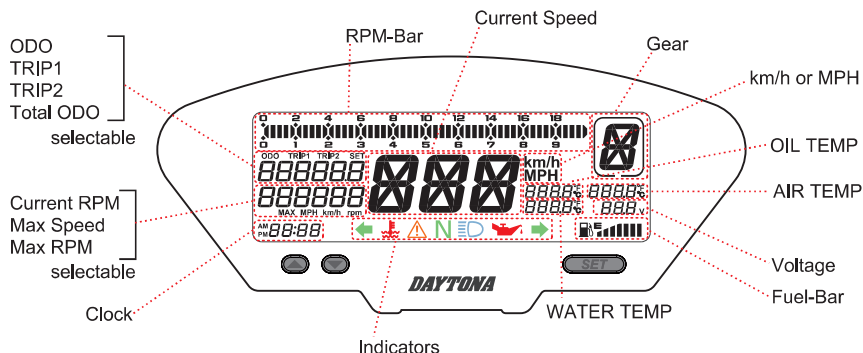
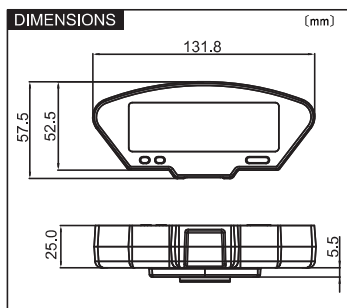


0°C ~ +150°C
(+32°F ~ +356°F)



-10°C ~ +60°C
(+14°F ~ +140°F)

- 132(W)x58(L)x25(D)mm
- Waterproof (IP67)
- ABS housing
- Stainless-steel bracket included





0-399km/h or 0-250MPH



0-20,000rpm



0-99,999.9km (mile)



1&2, 0-999.9km (mile)



-10°C ~ +60°C
(+14 °F ~ +140 °F)



40°C ~ +200°C
(+104 °F ~ +392 °F)



Memory & Recall



Memory & Recall



12h or 24h



Fuel Gauge



Low Battery Warning



Oil Changing Time Notification



Indicators

- ABS housing
- Clamp for $\Phi 22.2$ / 25.4 / 31.8mm handlebars
- Incl. magnetic speed sensor

RPM

ODO

TRIP1

TRIP2

Clock

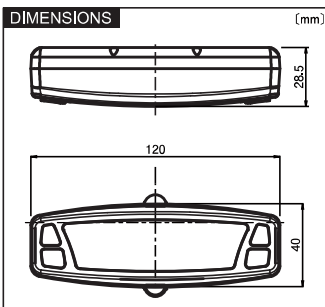
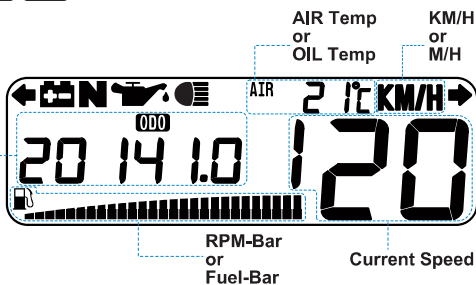
Max Speed

Max RPM

Oil changing

time

selectable



84787 BLACK

ASURA
MULTI FUNCTION COMPUTER



84580 SILVER

NANO I

Compact Gauge Series

- 40(W)x60(L)x17.6(D)mm • Without backlit • Coin cell driven (CR2032)
- Unit detachable (Mounting rubber & cable ties included)



85998



85996



85995

SPEED



0-300km/h or 0-188MPH



0-99,999.9km (mile)



0-99,999.9km (mile)



12h



Low Battery Warning

※ Incl. magnetic speed sensor

RPM



0-20,000rpm



Resettable & Non-resettable,
0-9,999.9hours



12h



Memory & Recall



Low Battery Warning

TEMP



0°C ~ +270°C
(+32° F ~ +518° F)



0°C ~ +60°C
(+32° F ~ +140° F)



12h



Memory & Recall



Low Battery Warning

※ Incl. R1/8 sensor

NANO II

Compact Gauge Series

- 40(W)x60(L)x22(D)mm • White LED backlit • Work on DC12V
- Clamp for Φ22.2/25.4mm handlebars



86596



86719



86533

SPEED



0-399km/h or 0-250MPH



0-999,999km (mile)



1 & 2, 0-99,999.9km(mile)



12h



Memory & Recall

※ Incl. magnetic speed sensor

RPM



0-20,000rpm



Resettable & Non-resettable,
0-9,999.9hours



12h



Memory & Recall

GEAR



N, 1, 2, 3, 4, 5, 6, 7, 8
Top 4/5/6/7/8 selectable



Bar-graph blinking

Compact Meter

Simple Gauge Series



Oil Temp Meter



89278



-9°C ~ 150°C



High/Low temp alert by Red LED backlight when higher than 120°C / lower than 5°C

- White LED backlight
- Waterproof (IPX7)
- Incl. R1/8 sensor

Volt Meter



89279

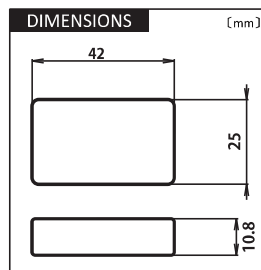


7.5 ~ 18.0V



Low voltage alert by Red LED backlight when less than 12V

- White LED backlight
- Waterproof (IPX7)



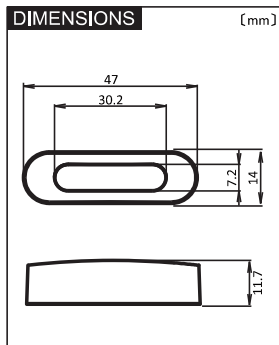
ALPHA

LED Micro Indicator



86531 BLACK

86532 CHROME



Body : ABS

Clamp : CNC Aluminum for $\Phi 22.2/25.4$ mm handlebars

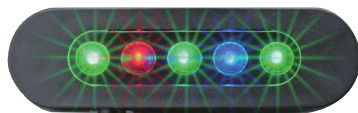
Indicators : With plain LED lamps



Horizontal Installation



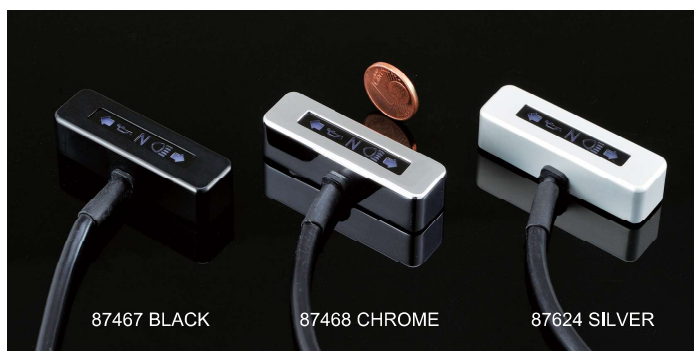
Vertical Installation



※Real scale

BETA

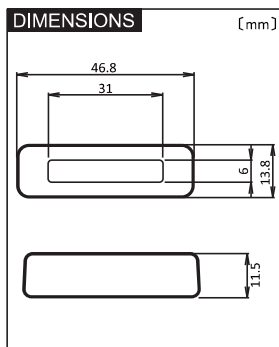
LED Micro Indicator



87467 BLACK

87468 CHROME

87624 SILVER



※Real scale

Body : CNC Aluminum

Bracket : SUS

Indicators : With symbols



CAPSULE120

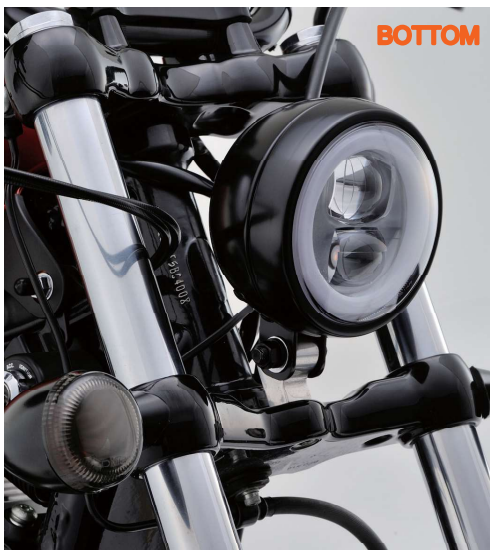
LED Headlight



SIDE

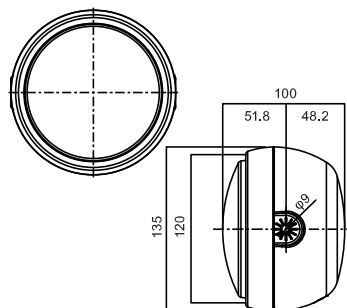


BOTTOM



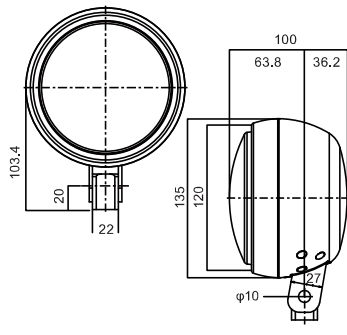
DIMENSIONS

[mm]



DIMENSIONS

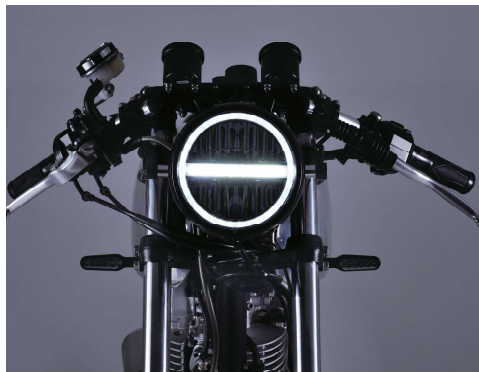
[mm]



- Steel housing
- Dia. 120mm lens
- Front Position Lamp (ring)

NEO VINTAGE

LED Headlight



88431 BLACK



88432 CHROME

- Steel housing
- 5-3/4" (146mm) lens
- Daytime Running Light (center-bar)
- Front Position Lamp (ring)
- With a hole for $\Phi 60\text{mm}$ gauge installation

VINTAGE

H4 Headlight



86903 BLACK RHS
86906 BLACK LHS

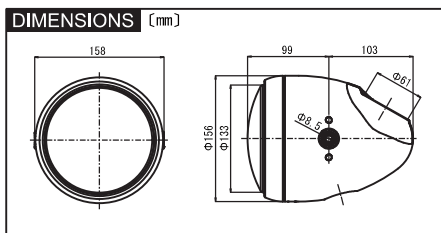


86904 CHROME RHS
86907 CHROME LHS



87357 BLACK & BLACK RHS
87800 BLACK & BLACK LHS

- Steel housing
- 5-3/4" (146mm) lens
- H4 12V 60/55W bulb with T10 5W position light
- With a hole for $\Phi 60\text{mm}$ gauge installation
- E-marked for right-hand traffic



Headlight Brackets

Universal

CNC Types



88624 for Φ41mm Fork

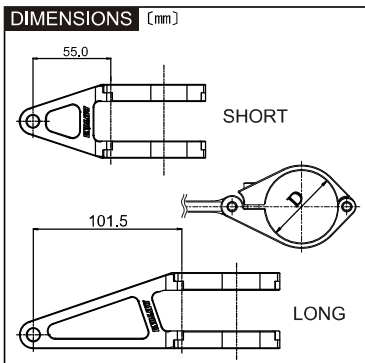


88619 for Φ41mm Fork



88624 SHORT

	D Size [mm]	Part No.
SHORT	35	88622
	39	88623
	41	88624
	43	88625
	49	88626
LONG	35	88617
	39	88618
	41	88619
	43	88620
	49	88621



Retro Types



Polish : Stainless-steel
Black : Steel



86942 for Φ41mm Fork



86910 for Φ41mm Fork



86941 for Φ39mm Fork



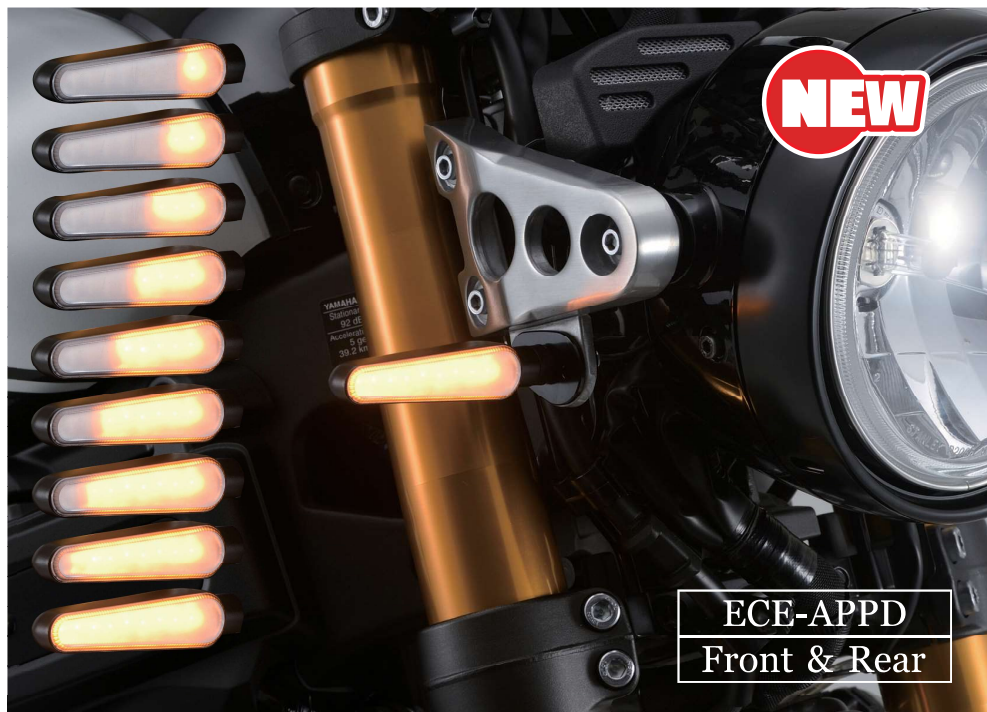
86909 for Φ39mm Fork



86981 for Φ35mm Fork

D-Light RAY

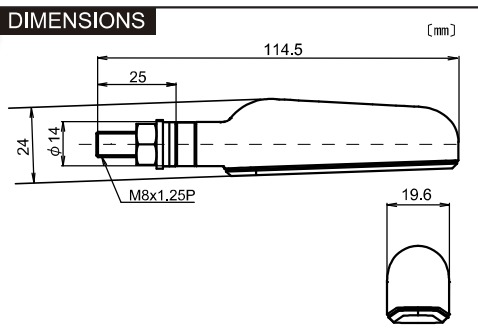
Surface Emitting Sequential LED Indicator



- Aluminum body
- M8 bolt installation
- ECE approved for front and rear
- LED sequential direction indicator for motorcycle.



89273



D-Light STELLAR

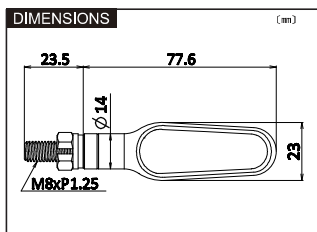
Sequential LED Direction Indicator



- Aluminum body
- M8 bolt installation
- ECE approved for front and rear

!! PATENT PENDING !!

Made in Japan

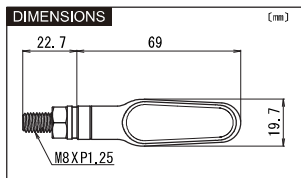


D-Light

LED Direction Indicator



- Aluminum body
- M8 bolt installation
- Design registered In Europe
- ECE approved for front & rear



BLACK BODY



89232 SMOKE LENS

CHROME BODY



86681 CLEAR LENS
86682 SMOKE LENS

SILVER BODY



86683 CLEAR LENS
86684 SMOKE LENS

D-Light SOL

Surface Emitting LED Direction Indicator

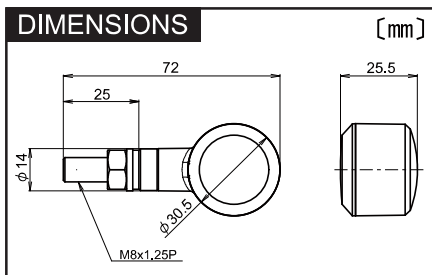


- Aluminum body
- M8 bolt installation
- ECE approved for front and rear



D-Light SOL-W

Surface Emitting LED Direction Indicator & Brake/Taillight



- Aluminum body
- M8 bolt installation
- ECE approved for rear indicator and stop and tail

Option for Direction Indicator

IC Relay for both LED & bulb

88985



- Power : DC8-16V (regular 12V)
- Power range : 0.1 ~ 100W
- Size : 38×28.4×17.5mm
- Flashes : 85 count/minutes
- Incl. convertible connector (2P→3P)

IC Relay for position & hazard

89460



- Power : DC8-16V (regular 12V)
- Power range : 0.1 ~ 100W
- Size : 38×28.4×17.5mm
- Flashes : 85 count/minutes

NEW

LED License Plate Lamp for motorcycles

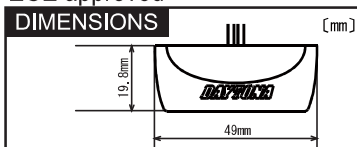
E

88957



ECE approved

DIMENSIONS



Mounting Plates



97238 HONDA



97420
YAMAHA, KAWASAKI



97398 SUZUKI



97399 SUZUKI



97235 KAWASAKI



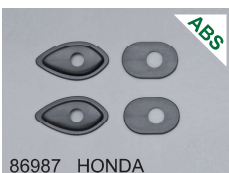
86963 SUZUKI



86964 SUZUKI



86965 KAWASAKI



86987 HONDA

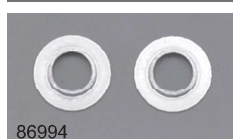


86988 YAMAHA



86989 YAMAHA

Adapter Collar M10



86994

Dual Anodized “TKM” Accessories

Handlebar End



For : I.D. 14-19mm handlebars

RED	BLUE	GOLD	GREEN	SILVER	BLACK
87331	87332	87333	87334	87335	87336

Oil Filler Cap



SIZE	RED	BLUE	GOLD	GREEN	SILVER
M20×P1.5	91885	91886	91887	-	-
M20×P2.5	91890	91891	91892	91893	91894
M24×P3.0	91895	91896	91897	91898	91899
M30×P1.5	91910	91911	91912	91913	91914

Size : M20×P1.5
M20×P2.5
M24×P3.0
M30×P1.5

Master Cylinder Tank Cap



NISSHIN Φ38



NISSHIN Φ42



NISSHIN Φ59

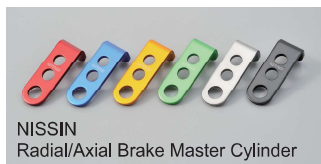
For : NISSHIN Φ38mm / Φ42mm / Φ59mm
brembo S30 / S35

FOR	RED	BLUE	GOLD	GREEN	SILVER
NISSHIN ϕ 38	92737	92738	92739	92740	92741
NISSHIN ϕ 42	92732	92733	92734	92735	92736
NISSHIN ϕ 59	92727	92728	92729	92730	92731
brembo S30/S35	92742	92743	92744	92751	92752



brembo S30/S35

Reservoir Tank Bracket



NISSHIN
Radial/Axial Brake Master Cylinder



NISSHIN
Radial Clutch Master Cylinder



NISSHIN
Axial Clutch Master Cylinder



TYPE	RED	BLUE	GOLD	GREEN	SILVER	BLACK
NISSHIN Radial/Axial Brake Master Cylinder	92662	92663	92668	92669	92676	92677
NISSHIN Radial Clutch Master Cylinder	92678	92679	92680	92681	92684	92701
NISSHIN Axial Clutch Master Cylinder	92704	92705	92706	92707	92708	92709

23

Step



STEP for RIDER

■ HONDA, ■ SUZUKI	96557
■ YAMAHA	96558
■ KAWASAKI	96559
■ KAWASAKI (Ninja250/400(2018))	97202



96557



96558



97202



96559



STEP for PASSENGER

■ HONDA	96574
■ YAMAHA	96575
■ SUZUKI	96576
■ KAWASAKI Type1 (Ninja250 etc.)	96660
■ KAWASAKI Type2 (ZRX2DAEG etc.)	96661



96574



96575



96576



96660



96661

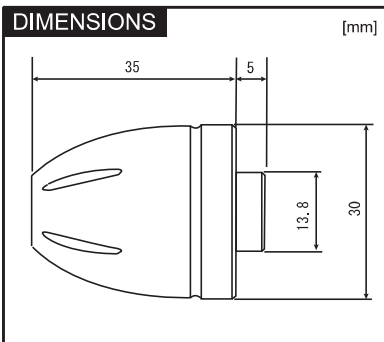
CNC Handlebar End

BULLET



- For I.D. 14-19mm
- Outer Diameter 30mm
- 2pcs/set

RED	BLUE	GOLD	GREEN	SILVER	BLACK
98369	98370	98371	98372	98373	98374



CANARD



- For I.D. 14-19mm
- Outer Diameter 30mm
- 2pcs/set

RED	BLUE	CHAMPAGNE	GREEN	SILVER	BLACK
99914	99915	99916	99917	99918	99919



AERO

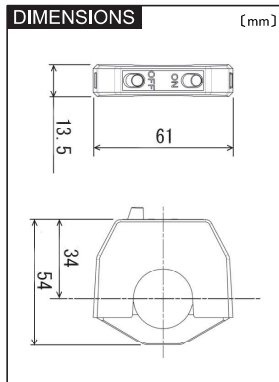


- For I.D. 14-19mm
- Outer Diameter 30mm
- 2pcs/set

RED	BLUE	CHAMPAGNE	GREEN	SILVER	BLACK
99920	99921	99922	99923	99924	99925



Slim Switch Series



Universal ON / OFF switch



- Max. current 15A (12V-180W, 6V-90W)
 - For $\Phi 22.2/25.4$ mm handlebars
 - Housing material: nylon
 - Wire length: 800mm
 - Comes in 4 different style
- 88158 Button seesaw type①
 88159 Flat seesaw type②
 88160 Toggle type③
 88161 Slide type④

ON / OFF switch for H4 Headlight



- Max. current 15A (12V-180W, 6V-90W)
- For $\Phi 22.2/25.4$ mm handlebars
- Housing material: nylon
- For H4 bulb only
- Wire length: 900mm
- 88162 Flat seesaw type② only

Smartphone Holder

Holder



- 2types(RIGID / DETACHABLE) available
- Width adjustable 55 ~ 85mm
- Length adjustable 110 ~ 147mm
※using additional arm : over 153mm possible
- Depth for 6 ~ 18mm
- Weight for up to 300g
- Clamp for $\Phi 22 \sim 29$ mm handlebars
- Angle(body & neck)adjustable with tool



87963



RIGID TYPE
(bolt-mount clamp)



87964



DETACHABLE TYPE
(quick-release clamp)

Case + Holder



- 2types(RIGID / DETACHABLE)
- 2size(XL / M)
- Inside dimension XL: 168×89×20mm
M: 137×70×20mm
- Clamp for $\Phi 22 \sim 29$ mm handlebars
- Neck angle adjustable with tool
- Body angle rotatable 360° by hand
- Touch-screen window



94805[XL], 94944[M]



RIGID TYPE
(bolt-mount clamp)



94806[XL], 94945[M]



DETACHABLE TYPE
(quick-release clamp)

Power Supply

Electronic Power Supply for Motorcycle

Connect to BATTERY



87237 USB × 1port



87238 USB × 2port



87239 USB × 1port
Cigarette socket × 1port



87406 USB × 2port
Cigarette socket × 1port



- Input : Battery (DC12V)
- Output : USB DC5V / 2.1A
Cigarette DC12V / 5A

Connect to ACC



99502 USB × 1port



99503 USB × 2port

- Input : DC12V
- Output : DC5V / 2.4A
- Wiring at brake switch
- Work with main switch

NEW

Built-in USB Power Supply + Multiuse Mount-bar

Master Cylinder Mount Type



93380 (Φ22.2mm × 100mm)
93385 (Φ22.2mm × 155mm)

Handlebar Clamp Mount Type



93381 (Φ22.2mm × 100mm)
93386 (Φ22.2mm × 155mm)

Stem Mount Type



93382 (Φ22.2mm × 100mm)
93387 (Φ22.2mm × 155mm)

- Input : DC12V
- Output : DC5V / 2.1A

SLIM-MOUNT USB

Electronic Power Supply for Motorcycle



89371 USB × 1port



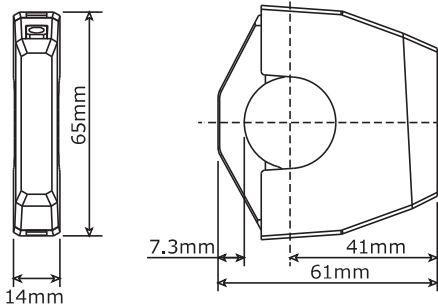
89372 USB × 2port



- Input : DC12V (Range: DC10V ~ 16V)
- Standby current :
1port (0.6mA or less) / 2ports (6mA or less)
- Output : DC5V (DC4.8 ~ 5.2V)
- Rated current : 2.4A (1port)
- For 22.2mm(7/8") / 25.4mm(1") handlebars
- Housing material : ABS resins
- ※Wiring at brake switch and ground(—)
- ※Work with main switch

DIMENSIONS

[mm]



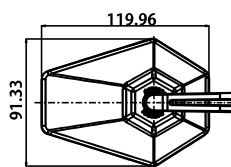
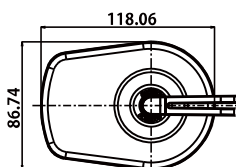
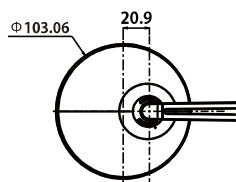
Bar End Mirrors

aluminum body & stem



DIMENSIONS

[mm]



Bar End Adapters



Rod Mirrors

aluminum body & stem



Rod Mirrors

aluminum body & steel stem



88611 (R)
88610 (L)



88969 (R)
88968 (L)



88979 (R)
88980 (L)



88981 (R)
88982 (L)



Seat Bag DH-708



4ℓ

- 285×250×110mm
- Artificial leather & Polyester
- Incl. rain cover



95741 BLACK



95734 CARBON × BLACK



95735 CARBON × RED



95736 CARBON × BLUE

Seat Bag DH-723



6ℓ

- 300×250×185mm
- Artificial leather & Polyester
- Incl. rain cover



97087



Seat Bag DH-710



7ℓ

- 280×235×145mm
- Artificial leather & Nylon
- Incl. rain cover



96043



Seat Bag DH-722/A4



7~12 ℓ

- 345×250×150~220mm
- Polyester
- Incl. rain cover
- Expandable



97241



Seat Bag DH-731



7~12 ℓ

- 345×280×115~190mm
- Polyester
- Incl. rain cover
- Expandable



98661



Tank Bag DH-727

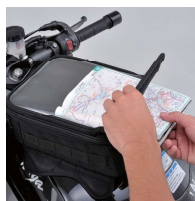


5 ℓ

- 280×185×100mm
- Polyester
- Incl. rain cover



98657



Tank Bag With Pocket For Smartphone



(M) 4~5 ℓ

(L) 6~8 ℓ

- (M) 285×175×95~110mm
- (L) 325×205×100~135mm
- Nylon
- Incl. rain cover
- Expandable



(M)95603, (L)95604



Touring Seat Bag DH-717~719, 724



DH-717

20~26 ℓ

- 290×300~400×200mm
- Polyester
- Incl. rain cover
- Expandable



96719

DH-718

33~42 ℓ

- 275×490~610×225mm
- Polyester
- Incl. rain cover
- Expandable



96720

DH-719

44~60 ℓ

- 320×410~570×300mm
- Polyester
- Incl. rain cover
- Expandable



96721

DH-724

53~70 ℓ

- 320×525~685×300mm
- Polyester
- Incl. rain cover
- Expandable



97980



NEW

Touring Seat Bag [Water Resistant] DH-732~734



Definition of WR : No water immersion inside seamless inner in 2 hours of shower test

20 ℓ DH-732

- Body : 200×300×300mm
- Pocket : 130×260×40mm
- Polyester, Tarpaulin, TPU
- Incl. rain cover



98878

40 ℓ DH-733

- Body : 260×430×320mm
- Pocket : 160×270×40mm
- Polyester, Tarpaulin, TPU
- Incl. rain cover



98879

55 ℓ DH-734

- Body : 300×530×320mm
- Pocket : 200×270×40mm
- Polyester, Tarpaulin, TPU
- Incl. rain cover



98880



NEW



Saddlebag MIL [Waterproof] DHS-9

HenlyBegins®

8ℓ

- 280×345×90mm
- Polyester



98912



Saddlebag MIL Green / DHS-10

HenlyBegins®

10ℓ Green

- 280×350×100mm
- Polyester



90557

15ℓ DHS-10

- 320×365×135mm
- Polyester



99702



Saddlebag MIL DHS-11 / DHS-12

HenlyBegins®

20ℓ DHS-11

- 280×350×100mm
- Polyester



99703(DHS-11), 99704(DHS-12)

30ℓ DHS-12

- 315×360×140mm
- Polyester



Side Bag DH-725

HenlyBegins®

32ℓ

(one side: 16ℓ)

- 260×460×185mm
- Polyester
- Incl. rain cover



98655



Heated Grips

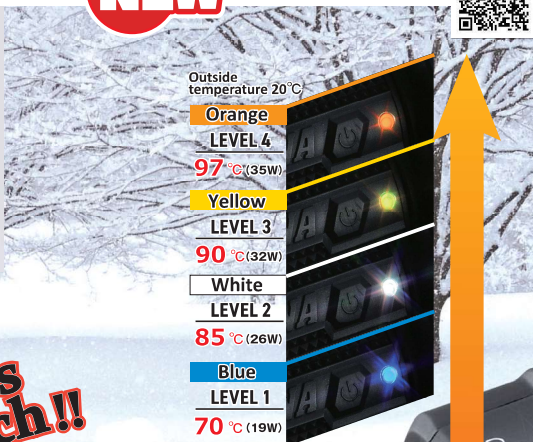
Built-in Switch [4-level Heat Control]

NEW



88640

For $\Phi 22.2\text{mm}$ (7/8") motorcycles
Built-in Switch
Open end



**Heated Grips
Built-in Switch!!**



Electrical Switch Series [4-level Heat Control]



87478

For $\Phi 22.2\text{mm}$ (7/8") motorcycles
Open end



88462

For ATVs
Open end



86610

For $\Phi 25.4\text{mm}$ (1") motorcycles
Closed end

Mechanical Built-in Switch Series [3-level Heat Control]



87407

For $\Phi 22.2\text{mm}$ (7/8") motorcycles
Open end



88019

For $\Phi 25.4\text{mm}$ (1") motorcycles
Closed end



88020

For Harley Davidson (96UP, 08UP)
Closed end



Daytona heated grips have been offering comfortable ride making hands warmer in cold weather. They are "must-have" items when it is cold.



Simple Switch [2-level Heat Control]



86607

For $\Phi 22.2\text{mm}$ (7/8") motorcycles
Closed end



86608

For ATVs
Closed end

GrippyGrip

Designed for a firm grip

GGD-BASE [for $\Phi 22.2\text{mm}$]

GrippyGrip™



88217 BLACK

GGD-NAMI [for $\Phi 22.2\text{mm}$]

GrippyGrip™



88561 BLACK



88218 GRAY



88219 BROWN



88562 BROWN



88563 DARK RED

GGD-DELTA [for $\Phi 22.2\text{mm}$]

GrippyGrip™



88565 BLACK



88566 BROWN



88567 DARK RED



88568 RUBBER-LIKE



GGD-AMI [for $\Phi 22.2\text{mm}$]

Grippy Grip™



88569 BLACK



88613 GRAY



88570 BROWN



88614 DARK BLUE



88615 DARK GREEN



88571 DARK RED

GGD-NINJA [for $\Phi 22.2\text{mm}$]

Grippy Grip™



88663 BLACK



88664 GRAY



88665 BROWN



88666 DARK RED



GGD-KANI [for $\Phi 22.2\text{mm}$]

Grippy Grip™



88937 BLACK



88938 GRAY



88939 BROWN



88940 CARAMEL



88941 WHITE

GGD-SAKURA [for $\Phi 22.2\text{mm}$]

Grippy Grip™



88942 BLACK



88943 GRAY



88944 CARAMEL



88945 PINK



88946 WHITE



GGDI-ARC I [for $\Phi 25.4\text{mm}$]

Grippy Grip™



88667

GGDI-ARC III [for $\Phi 25.4\text{mm}$]

Grippy Grip™



88675



GGDI-OCTA [for $\Phi 25.4\text{mm}$]

Grippy Grip™



88674



GGD-KATANA [for $\Phi 22.2\text{mm}$]



GGD-CELL [for $\Phi 22.2\text{mm}$]



GGD-LINE [for $\Phi 22.2\text{mm}$]

INTERNATIONAL
DESIGN
PATENTED

Grippy Grip™



88769 GRAY



88658 RED



88659 BLUE



88660 GREEN



88661 YELLOW

Display Stand for GrippyGrip



88964



※ image

Size : 300×445×150mm

Material : Steel

Weight : 2.8kg



We are sponsoring Nitro Nori (Noriyuki Haga) for 2019.

DAYTONA
<https://daytona-europe.com>